



**COMPANY PROFILE**  
THE IDEAL WOOD FLOORING SOLUTIONS

# TABLE OF CONTENT

- ABOUT US
- VISION / MISSION
- WHAT WE DO
- SERVICE
- PRODUCTS
- PROJECTS
- MAINTENANCE
- CERTIFICATES
- CONTACT

# OUR STORY



E.S.GROUP was established in 2006 specializing in supplying and installation of wood floors. Our talents and dedication helped us grow and become market leaders in the field, providing the ideal flooring solutions from in-house wooden laminated parquet to outdoor decking with natural and composite timber, offering varieties of solid wood, engineered wood, rubber floor, cork flooring and LVT tiles.

Our wood flooring range is known for its high quality and reliability, as well as its artistic and elegant look, so for us to keep on our promise to deliver high standard finishing we've dedicated a team of experts and well-trained professionals to provide installation services.

We're also expanding to include custom-built flooring designs, which are perfect combination of elegance and beauty.

Our portfolio ranges from commercial and industrial finishing, private villas, royal palaces, luxurious hotels resorts and governmental projects. In addition, we provide maintenance services, so our customers enjoy the high-quality work we provided for longer.



# OUR VISION

A market leader and customer's first choice for trusted high-quality products, delivered by a professionally qualified team of staff and technicians who are continuously up-to-date with the market latest trends, innovative solutions and technologies.

# OUR MISSION

## Mission 01

We are dedicated to providing customers with not only reputable materials and exemplary service but also quality installations.

## Mission 02

Provide our customers with state-of-the-art materials, that brings elegance and reliability, to the heart of their homes.

# OUR PRODUCT

We are dedicated to providing our customers with reputable materials, exemplary service, and quality installations.

Our specialities:

- Laminated Flooring
- Engineered Flooring
- Solid Wood Flooring
- Design Flooring
- Cork Flooring
- Leather Flooring
- Rubber Flooring
- Outdoor Decking
- Raised Flooring



# SOLID WOOD

Solid wood flooring offers the perfect balance of luxury and practicality for any interior. It is good looking, long lasting, warm underfoot and a design chameleon, so there's no need to change your floor whenever you change your color scheme.

Can be maintained Hardwood flooring will actually add value to your home, as well as make it more saleable, so investing in this beautiful tough and durable material makes sense all around.



Beautifully reproduces the Elegance and Natural characteristic of wood

- "Looks Good in All Décor Theme"
- Long-Lasting & Cost-Effective
- "Strong & Durable"



# SOLID WOOD



# ENGINEERED WOOD

Engineered wood flooring is made up of a thin veneer on top of less-expensive plywood. This distinctive style of manufacturing not only helps in the conservation of natural wood but also makes the flooring both cheaper and stronger. A new industry trend is to replace plywood with recycled wood fiber mixed with stone dust which provides additional dimensional stability. Engineered wood flooring offers an installation advantage as it is easier and more cost-effective to install than traditional hardwood floors.



- It comes in a whole range of species, grades and finishes
- It lends itself to wider boards
- It's easy to install

# ENGINEERED WOOD



# LAMINATE WOOD FLOORING

Protected by a tough external layer and resin coating Laminate Wood Flooring is much stronger and scratch resistant, impact-resistant, easy to install, cheaper and easy to maintain. Discover extraordinary decors, palpably authentic surfaces and a wide range of decorative patterns.



- Laminate flooring offers a variety of styles
- Laminate flooring is easy to clean and maintain
- Laminate flooring is economical

# LAMINATE WOOD FLOORING



# CORK FLOORING

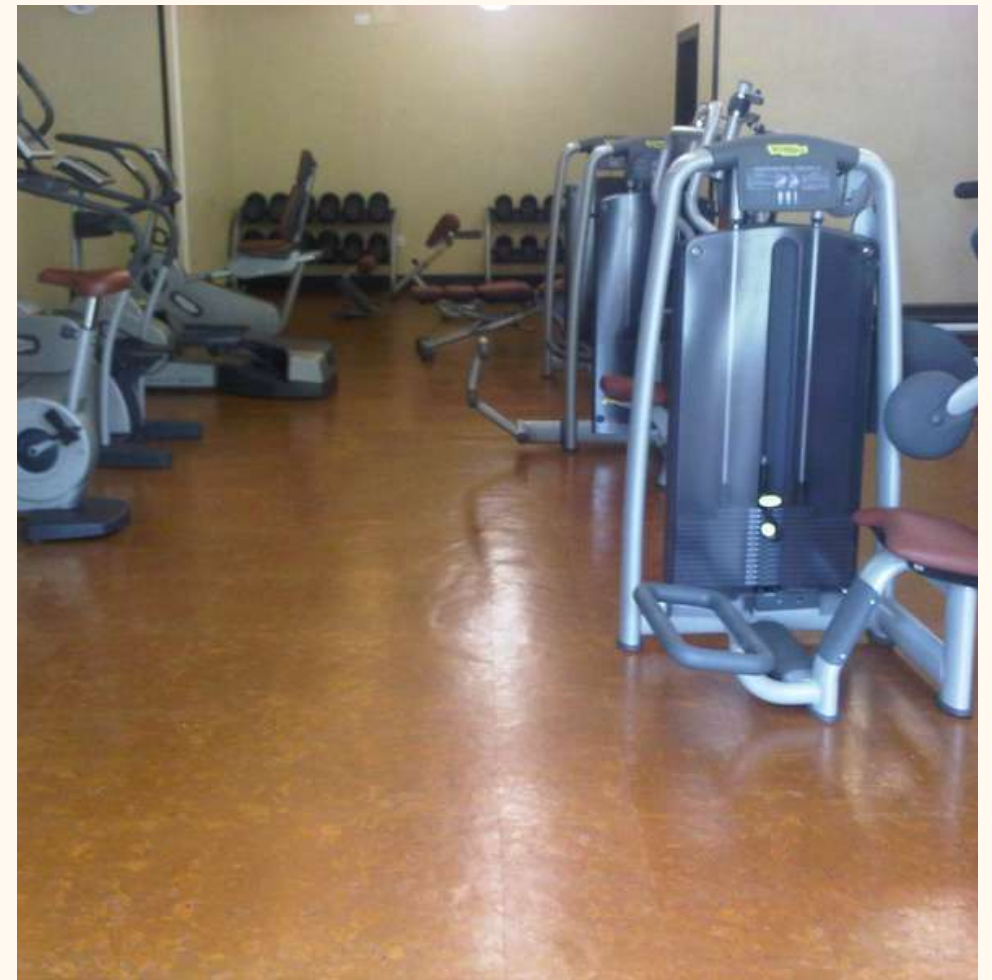
Cork flooring is a natural and renewable material, harvested from the bark of cork oak trees, which are native to Spain, Portugal and Tunisia, and has been used in construction for centuries.

It's gained popularity in the United States as flooring material because of its durability, beauty, green qualities and other unique characteristics as durable, healthy, safe, comfortable.



- Durable. It resists cracking and abrasions and is impermeable to gas and liquid.
- Healthy. Cork is naturally resistant to mold, mildew and termites
- Safe. Fire-resistant, cork will melt or ignite only at very high temperatures
- Aesthetically versatile.

# CORK FLOORING



# DECK FLOORING

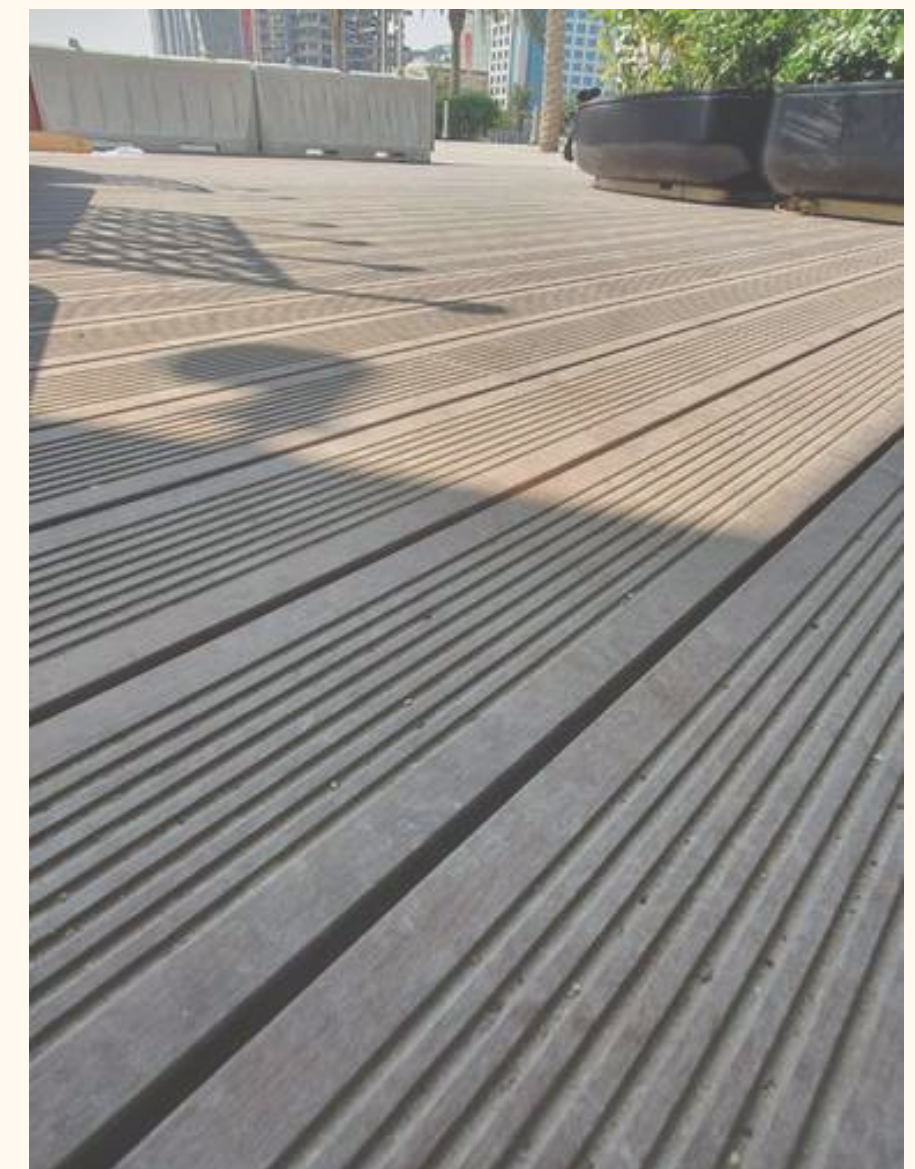
Composite decking is made of various types of materials, including wood powder. Composite decking is much heavier than naturally pure wood decking. Because the substance of WPC material is higher than real wood.

What's more, the composite decking will be stained, painted, coated during the production process.



- Deck tiles create attractive designs and patterns.
- Practical for the indoor-outdoor family.

- Longer composite floor life.
- Transforms lifestyle properties.



# DECK FLOORING



# LVT FLOORING

LVT is a printed vinyl flooring material that combines stylish and realistic design looks with high performance, great durability, easy installation and low maintenance benefits.

Luxury vinyl tile is a versatile flooring choice usually made from multiple layers of PVC vinyl, making it ideal for areas such as bathrooms, kitchens and other commercial uses.



# LVT FLOORING



# OUR PROJECTS



Banana Island



Katara Crescent Hotel



Mandarin Hotel



Westin Hotel



Kempinski Hotel



Ramada Hotel



W Hotel



Intercontinental Hotel



Hilton Hotel



Movenpick Hotel



Danah tower



Qatar Central Bank



Ministry of Interiors



Warwick Hotel



Beef Bar



Em Sherif Restaurant



Mango



Villeroy & Boch



Nike Shop - Qatar



High-end DIOR



VVIP Royal



Private Villas



Papermoon



The Pearl Pergolas

# ROYAL PALACE PROJECT

## DESIGN WOOD FLOORING

Solid wood 15mm

Design size: 14m x 7m

Wood species: Oak, Maple, Walnut,  
Wenge, Karelian Birch, Amaranth, Cherry

Finishing: Wax Oil top coat



# PRIVATE PROJECTS

## ENGINEERED WOOD

Multi-layer Engineered flooring 15mm

/3.5mm top layer solid

Design size: 9mm x 4mm

Wood species: Oak, Maple, Walnut,  
Wenge

Finishing: Water based top coat



# LAMINATE FLOORING

A multi-layer synthetic flooring product fused together with a lamination process.

Design size: 8mm / AC 5

Wood species: Oak, Maple, Walnut, Wenge

Finishing: Water based top coat



# MAINTENANCE

As professional floor maintenance contractors, we will always advise on how to keep your floors in the best condition, as well as competitively quoting for floor installation, maintenance, and restoration, including repairing, sanding, coating, recoating scratch removal, deep floor cleaning, anti-slip treatments, and more.

Our maintenance division, can give your commercial property a real overhaul and look significantly better.





# CERTIFICATE

Certificate No: ICAAQ240111



This Certificate is granted to the organization

## EXPERT SPECIALIST GROUP

Ahmed Bin Ali Business Center, Street: 230,  
C Ring, New Salata, P.O Box: 13977,  
Doha, Qatar

Has been assessed and found to be in accordance with the standard requirements,

## ISO 9001:2015 Quality Management System

For the full scope of certification

Installation of wood. Trading in wood.

Registration Date : April 16, 2024  
Issue Date : April 16, 2024  
Certificate Expiry : April 16, 2025  
Recertification Due : April 16, 2027  
Surveillance Audit : 1<sup>st</sup> Year  2<sup>nd</sup> Year

*Matthew*

Vice President



Head office: Suite No 13304, SW 2<sup>nd</sup> Street, Yukon, OK, 73099, United States of America

The certificate may be rendered invalid if there is any lack of fulfillment of conditions set out in the rules of ICA Certification Body for compliance with ISO/IEC 17021-1:2015 'Conformity Assessment'.  
Email: [info@ica-cb.com](mailto:info@ica-cb.com) Website: [www.ica-cb.com](http://www.ica-cb.com)



# CERTIFICATE

Certificate No: ICADQ240427



This Certificate is granted to the organization

## EXPERT SPECIALIST GROUP

Ahmed Bin Ali Business Center, Street: 230,  
C Ring, New Salata, P.O Box: 13977,  
Doha, Qatar

Has been assessed and found to be in accordance with the standard requirements,

## ISO 45001:2018

Occupational Health and Safety Management System

For the full scope of certification

Installation of wood. Trading in wood.

Registration Date : December 04, 2024  
Issue Date : December 04, 2024  
Certificate Expiry : December 04, 2025  
Recertification Due : December 04, 2027  
Surveillance Audit : 1<sup>st</sup> Year  2<sup>nd</sup> Year

*Matthew*

Vice President



ACCREDITED  
USA  
USASAB1023



Head office: Suite No 13304, SW 2<sup>nd</sup> Street, Yukon, OK, 73099, United States of America

The certificate may be rendered invalid if there is any lack of fulfillment of conditions set out in the rules of ICA Certification Body for compliance with ISO/IEC 17021-1:2015 'Conformity Assessment'.

Email: [info@ica-cb.com](mailto:info@ica-cb.com) Website: [www.ica-cb.com](http://www.ica-cb.com)



# CERTIFICATE

Certificate No: ICADQ240426



This Certificate is granted to the organization

## EXPERT SPECIALIST GROUP

Ahmed Bin Ali Business Center, Street: 230,  
C Ring, New Salata, P.O Box: 13977,  
Doha, Qatar

Has been assessed and found to be in accordance with the standard requirements,

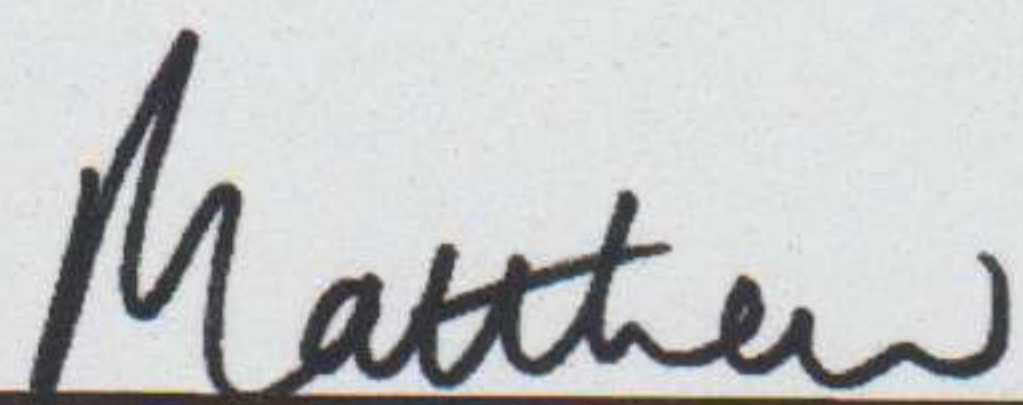
# ISO 14001:2015

## Environmental Management System

For the full scope of certification

Installation of wood. Trading in wood.

Registration Date	: December 04, 2024
Issue Date	: December 04, 2024
Certificate Expiry	: December 04, 2025
Recertification Due	: December 04, 2027
Surveillance Audit	: 1 <sup>st</sup> Year <input type="checkbox"/> 2 <sup>nd</sup> Year <input type="checkbox"/>



Vice President

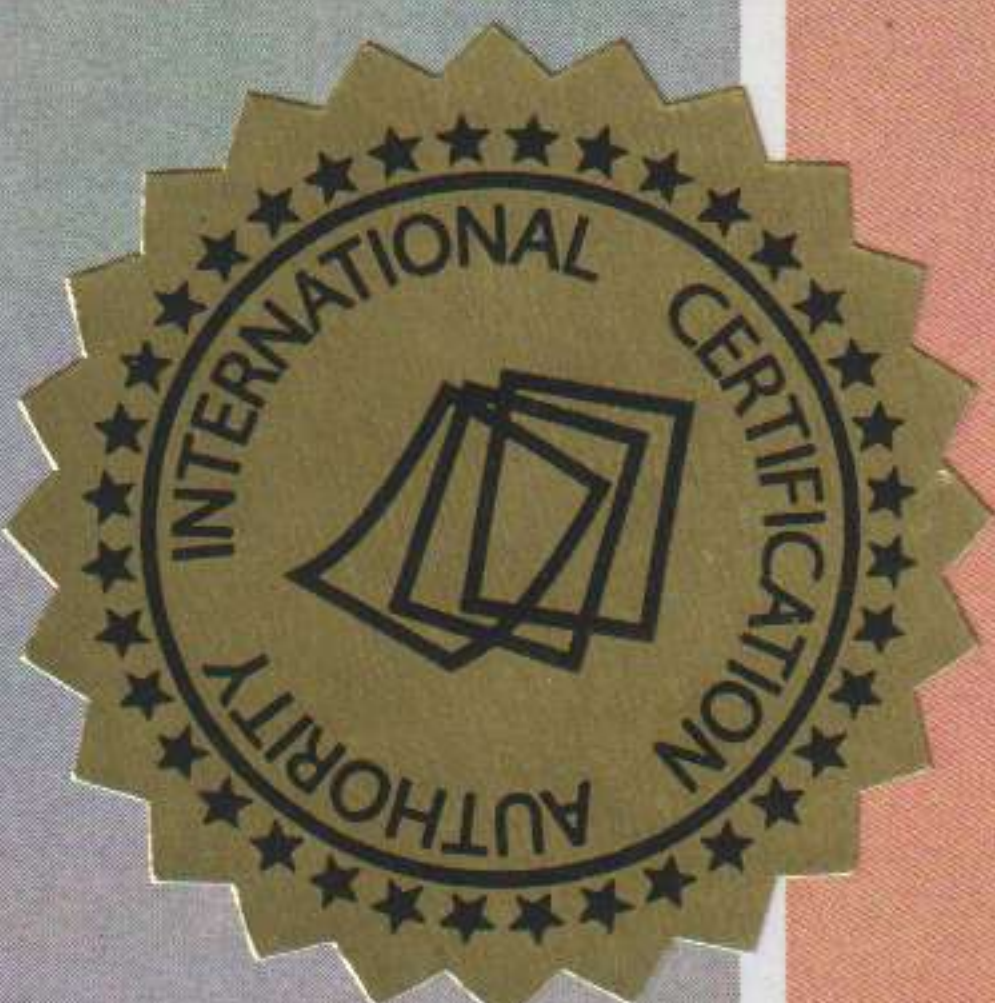


ACCREDITED  
USA  
USASAB1023



Head office: Suite No 13304, SW 2<sup>nd</sup> Street, Yukon, OK, 73099, United States of America

The certificate may be rendered invalid if there is any lack of fulfillment of conditions set out in the rules of ICA Certification Body for compliance with ISO/IEC 17021-1:2015 'Conformity Assessment'.  
Email: [info@ica-cb.com](mailto:info@ica-cb.com) Website: [www.ica-cb.com](http://www.ica-cb.com)





## THANK YOU

Ahmad Bin Ali Business Center  
2nd floor, bldg 289, st. 230, C-Ring,  
New Salata

P.O.Box: 13977 - Qatar  
Tel: +974 4443 5827  
Mob: +974 5556 5270

[info@esgqatar.com](mailto:info@esgqatar.com)  
[www.esgqatar.com](http://www.esgqatar.com)

